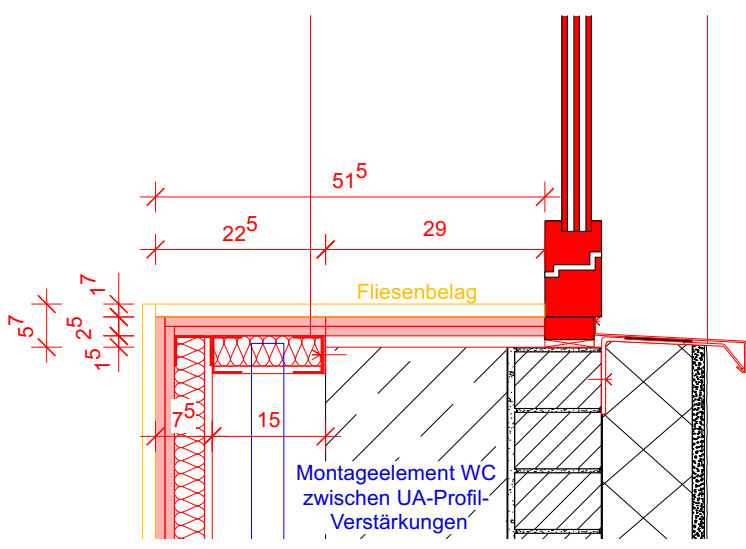






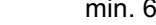




ÜBERSICHT

This architectural cross-section drawing shows a building with a gabled roof. The roof structure includes rafters and a central ridge. The interior features a central vertical space, possibly a staircase or a large hall, with smaller rooms on either side. The basement is shaded in blue and contains two door openings. The building is supported by several foundation blocks. The drawing is labeled 'ÜBERSICHT' (Overview) in the top left corner.



|   |  |   |                  |   |   |
|---|--|---|------------------|---|---|
|  | Feuerhemmend<br>Faserdämmstoff (MF)<br>min. 60mm |  | Feuerhemmend     |  | Faserdämmstoff (MF)<br>min. 60mm  |
|  | Imprägnierung                                    |  | Feuerbeständig   |  | Installations-schachtwand:<br>2x GK "Säulenboord"<br>(2x 12,5 mm) + MF (40mm) |
|  | Türschwelle (höhen relativ<br>zur Raum OKFF)     |  | Revisionsöffnung |  | Verstärkung Massivbauwand<br>(Federeisen)                                     |

Fliesen -> kein Wandbelag  
Eck-/ Abschlussprofil

Fliesen -> div. Wandbelag  
Übergangsprofil

Verlege-  
startpunkt

Verlegestartpunkt Fliesen  
(ohne Bemaßung -> ab  
Raumecke)

HÖHENBEZUGSSYSTEM = ü. NHN; OKFF ±0.00 = 309,44

[illegible]

**boxx3**  
architektur & gestaltung

## AUSFÜHRUNGSPLANUNG

Generalsanierung Arche-Noah-Schule

Arche-Noah-Schule, Friedensweg 8b, Bad Windsheim

Flur-Nr. 1130/20

BAUHERR: Diakonisches Werk Neustadt/Aisch  
Kirchplatz 5  
91413 Neustadt/Aisch

PLANUNG: boxx3 - architektur & gestaltung  
Bohlleitenweg 19  
97082 Würzburg

|             |                                     |      |               |           |
|-------------|-------------------------------------|------|---------------|-----------|
|             | DATUM                               | NAME | FORMAT        | PLAN-NR.  |
| BEARBEITET  | 17.06.2026                          | EJ   | A0 (841/1189) | A_LP05_DE |
| GEPRÜFT     |                                     |      |               | SP_UG_SA  |
| MASSSTAB    | PLANINHALT                          |      |               | INDEX:    |
| M 1:20, 1:5 | Fliesenspiegel: UG Sanitärräume (2) |      |               | A         |